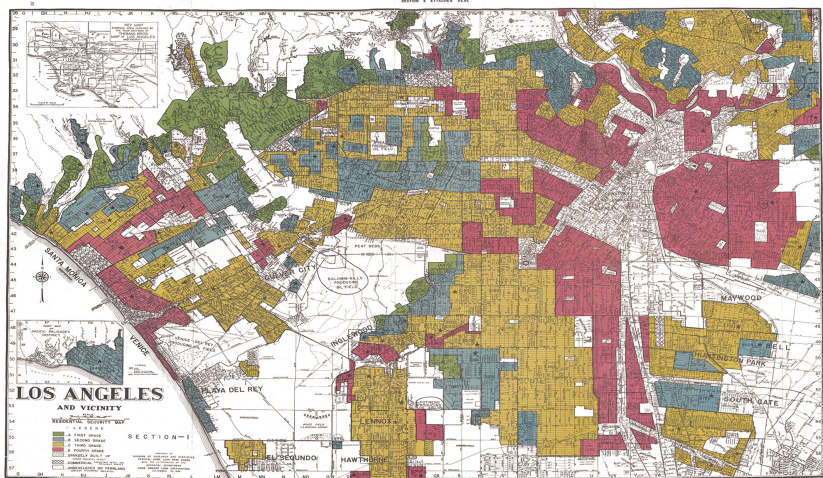


ENGL 2297: Special Studies in Histories
Visual Image Exercise

As we discussed in class, images reveal a world and can be used to create one. With this in mind, find one image online that illustrates an aspect of Ralph Ellison’s *Invisible Man* or Claudia Rankine’s *Citizen*.

1. In one paragraph explain how it relates to and illustrates the work.
2. Write a caption (one short sentence or a few words) for the image as if it was in fact an illustration for the work, i.e. “Invisible Man’s
3. Cite the image using MLA style

Example:



1938 Home Owners’ Loan Corporation (HOLC) map of Los Angeles with redlined neighborhoods

In Claudia Rankine’s *Citizen*, the narrator describes seeing the documentary *The House We Live In*, which recounts the history of racist housing policy in the United States. African Americans were systematically denied home ownership due to discriminatory lending practices, called “redlining.” Neighborhoods with significant “Negro” or “foreign” populations were shaded red to mark them as unfit for investment. Although redlining is typically associated with the 1930s-1960s, Rankine shows how subtler forms of redlining continue even today. On her way home from the film screening, the narrator discovers that her neighbor has called the police because a “menacing black guy” (15) is casing her house. That “guy” ends up being the narrator’s friend, whose presence is policed simply because he is a black body in a white space. Years after redlining has officially been abolished, black people are still redlined—still told, implicitly as well as explicitly, that they do not belong.

Robert K. Nelson, et al., “Mapping Inequality.” *American Panorama*. 25 Mar. 2018, <https://dsl.richmond.edu/panorama/redlining/#loc=10/34.0050/-118.1565&opacity=0.8&city=los-angeles-ca&sort=16,306,318>